

Upcoming Enhancements (v10.25)

For MLS Staff and Key Contacts Only

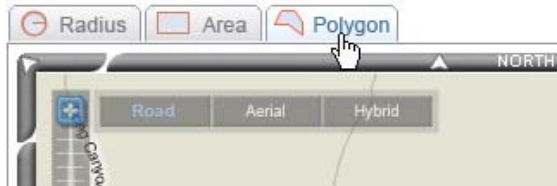
Updated April 17, 2007

Radius Search Available With or Without a Map

In response to customer requests, the new Radius Search enables you to perform a classic, text-based radius search, without a map interface. You now have two ways to search for listings within a specified radius around a target location: plotting the radius visually using the Map Search, or without a map using the new Radius Search.

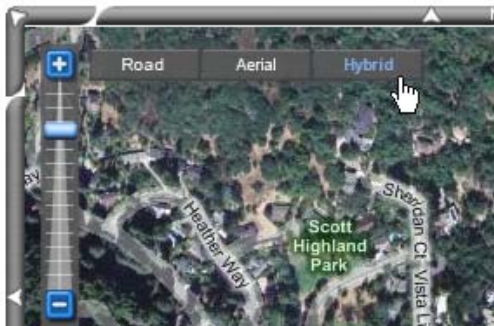
New Polygon Selection Tool Enhances the Map Search

When using the Map Search, you are no longer limited to drawing circular or rectangular selections on the interactive map. The new Polygon option lets you draw an irregular area with up to 10 line segments (sides). To use this new feature, select **Map** from the **Searches** menu, then click the **Polygon** button that displays above the map.



New Aerial and Hybrid Views Give the Map Search More Visual Dimension

The Map Search now offers three different visual options that make it an even more powerful searching tool. You can now switch between viewing the standard street map, a new aerial view, or a hybrid of the street map and aerial view. Just click the desired option right on the map to seamlessly change views. The aerial and hybrid views add a visual dimension that lets you see real geographical features and make more precise selections on the map. In addition, the redesigned zoom bar is more conveniently placed and easier to use.



Search Menu Changes

The Search menu now offers **Map** and **Radius** options to allow navigation to the updated search options. These options replace the previous **Radius/Map** item.

A New Agent Preference Lets You Customize the Default Distance for Radius Searches

A new field has been added to the Agent Preferences page, allowing you to specify the distance that is initially selected in the Radius Search and in the Radius/Map Target Criteria section that

displays below the map in the Map Search. To use the new **Default Search Radius** field select **Admin > Your Preferences**, and expand the Radius/Map Search Defaults section near the bottom of the page.

Maps Powered by Microsoft® Virtual Earth™

Mapping in the MLS is now based on Microsoft® Virtual Earth™ technology. This new platform provides an improved visual presentation of the map (such as the new aerial and hybrid views in the Map Search), as well as the foundation for more advanced map features to be released in the future.


Upload Multiple Listing Pictures All at Once

You can now upload multiple pictures for a listing at a time and manage pictures from the same page! The new **Manage Pictures** page (accessible from the Revise Listing menu) replaces the separate **Upload** and **Manage Pictures** links with a completely redesigned, more robust interface. In the Upload Pictures area you can select up to five pictures to upload all at once. In the Manage Pictures area you can add picture descriptions, change the display order and delete pictures.

Change to the Map Report

The pins that display on the Map Report, which is available from the Map Listings page and the CMA Package, no longer match the color that is associated with each listing's status. We apologize for removing this feature; however, it was necessary in order to move forward with new mapping technologies. We will be happy to restore this functionality if it becomes possible in the future.

New "Show Me" Tutorials

Training animations are now available on the Map Search and the new Manage Pictures page. Click **Show Me**  in the upper-right corner of the page to quickly learn how to best use these powerful features.

New Feature Spotlight on Client Portal

To help you take full advantage of the Client Portal feature, a new Feature Spotlight training presentation is now available. From the **Help** menu, choose **Feature Spotlights** and then select **Client Portal** to learn how using the Client Portal can benefit both you and your clients.

New Client Portal Help

Your Client Portal Web pages now feature a Help icon that your clients can click to read the answers to frequently asked questions about the Client Portal. Your clients can learn the best way to quickly identify newly matched listings, how to leave and read comments, and more!

