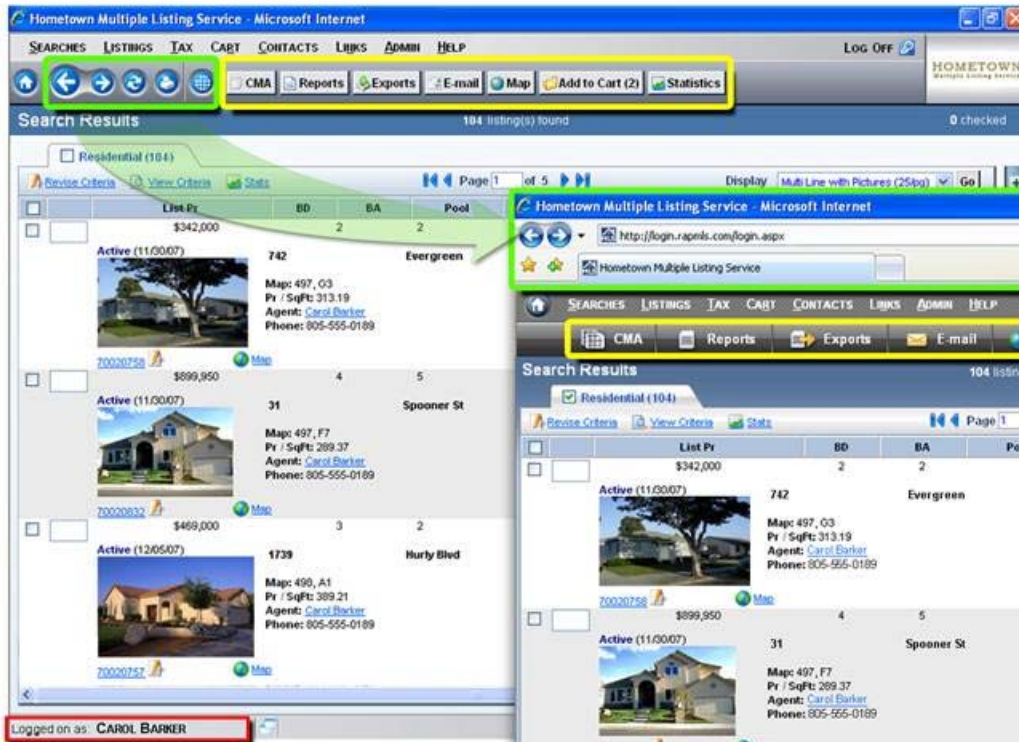


March 30, 2008, MLS Changes

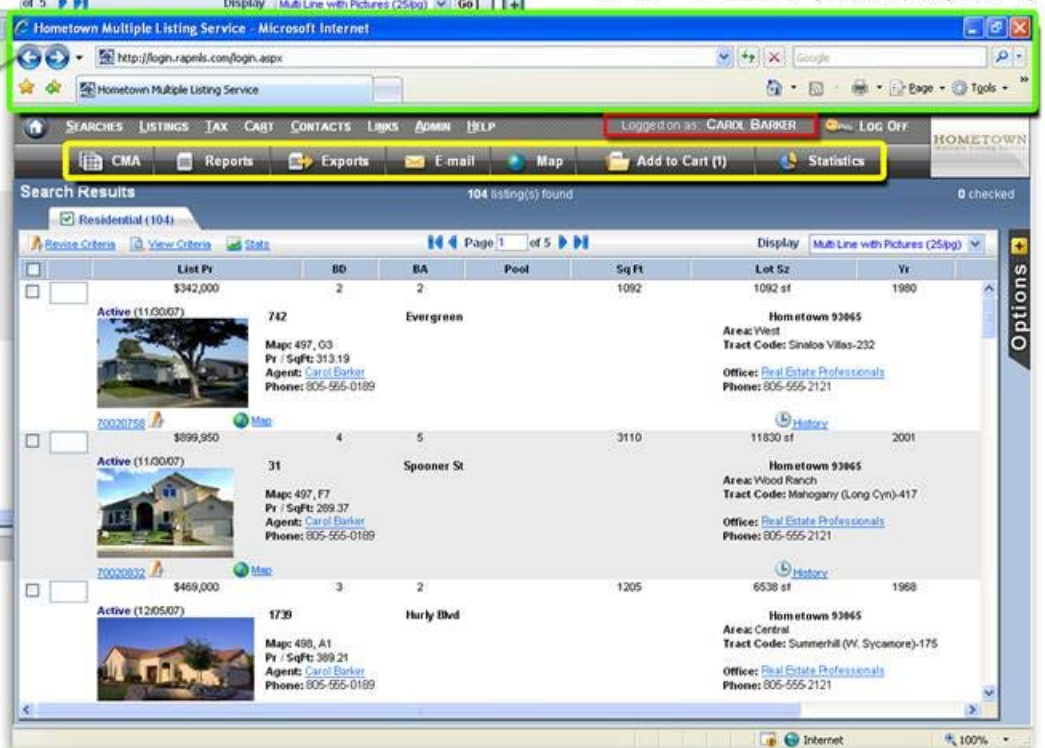
The new look of our MLS is shown below, along with a legend to help in identifying where these screen changes will occur on March 30, 2008. Please read the entire message so you are prepared for these changes in our MLS..

BEFORE

 Back/Forward Navigation, Refresh, Print  MLS Toolbar  Logged On User Info



AFTER (in Internet Explorer® 7)



As you can see from the screen shot, the biggest change is the “removal” of the back and forward arrow icons as well as the icons for CMA’s, Reports, Exports, E-mail, Map, Add to Cart and Statistics. In actuality, they will not be “removed” just moved. The MLS will now function within the Internet Explorer window and having the arrows there twice is redundant. The back and forward arrow keys can now be found at the top left of the browser.

Next, the CMA’s, Reports, Exports, E-mail, Map, Add to Cart and Statistics icons have been moved to accommodate a better look and feel to the MLS and are now more central to the page.

Finally, the “logged on as” no longer displays in the lower left of the page. It has been moved to the top of the page above the “Add to Cart” icon.

These changes have opened up the page of the MLS considerably and now agents have the full use of the IE search features and forward and back arrows. If you use IE 6, you will be able to print using the IE print functions, if you use IE 7, the print icon is on the upper right hand side below the search bar.